

SPEC SHEET + MEASUREMENTS



Eddie Bauer® Women's 1/2-Zip Performance Fleece.

EB235

Product photo



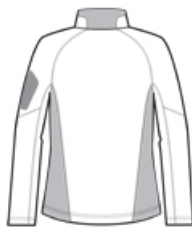
Smooth-faced fleece with a subtle grey print gives this 1/2-zip a sleek performance look.

- 7.7-ounce, 95/5 poly/spandex
- Princess seams
- Reverse coil zipper
- Welded zippered left sleeve pocket
- Open cuffs and an open hem
- Contrast heat transfer Eddie Bauer logo on right hem

Sketches



front



back

SPEC SHEET + MEASUREMENTS



Eddie Bauer® Women's 1/2-Zip Performance Fleece.
EB235

PRODUCT MEASUREMENTS

	XS	S	M	L	XL	2XL	3XL	4XL
Size	2	4/6	8/10	12/14	16/18	20/22	24/26	28/30
Bust	18 1/2	19 1/2	20 1/2	22	23 1/2	25	27	29
Body Length at Back	25 1/2	26	26 1/2	27	27 1/2	28	28 1/2	29
Sleeve Length	31 1/2	32	32 1/2	33 1/8	33 3/4	34 3/8	34 3/4	35 1/8

Bust: Measured across the chest one inch below armhole when laid flat.

Body Length at Back: Measured from high point shoulder to finished hem at back.

Sleeve Length: Start at center of neck and measure down shoulder, down sleeve to hem.

SIZE CHARTS

	XS	S	M	L	XL	2XL	3XL	4XL
Size	2	4/6	8/10	12/14	16/18	20/22	24/26	28/30
Bust	32-33	34-35	36-37	38-40	41-43	44-46	47-49	50-52

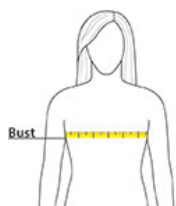
SPEC SHEET + MEASUREMENTS



Eddie Bauer® Women's 1/2-Zip Performance Fleece.

EB235

HOW TO MEASURE



BUST

Measure under the arm and around the fullest part of the bust with arms down, keeping tape horizontal.

COLORS



Black
PMS BLACK
C



River Blue
Navy
PMS 533C